



VIVAX
METROTECH



Locators & Supplies, Inc.
(800) 950-6666
sales@locatorsandsupplies.com
www.locatorsandsupplies.com

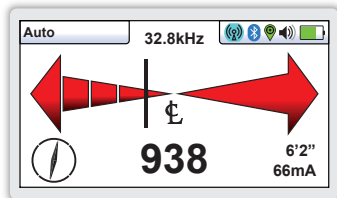
vLoc3-9800 UTILITY LOCATOR

- Fully-automatic gain control
- Optional receiver-to-transmitter link
- Compass indicator
- Distance-sensitive Left / Right Guidance™
- Internal data logging
- Optional Bluetooth connectivity
- Optional plug-in EMS locator

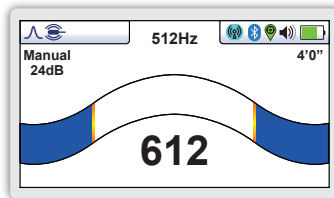
The **vLoc3-9800 utility locator** introduces new innovative tools for locating buried utilities assuring damage prevention while gathering information for analysis.

The highly user-configurable vLoc3-9800 contains two passive locate modes, and a range of configurable frequencies from 16Hz to 200 kHz. Audio and mechanical vibration alerts can also be configured by the user providing warnings for shallow depth, overload, overhead cables, and excessive swinging. Plug-and-play options for the receiver include optional Bluetooth module useable with external GPS devices and MLA (marker locator adapter) add-on to locate buried markers. Depth of cover and current on the line are shown with the push of a button. With the optional A-Frame the user can pinpoint cable faults with directional arrows.

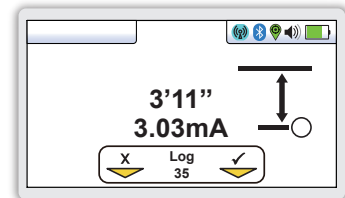
The vLoc3-9800 provides versatility with low frequencies for the telecom, power, and CATV industries as well as higher frequencies for the gas, water and sewer industries.



Line locate mode - Shows left/right indication with continuous depth and current



Sonde locate mode - Shows peak locate sonde position with continuous depth reading



Depth readings, current on the line and logging options - Are shown each time a depth reading is taken

Alkaline and Li-ion Batteries

- Alkaline = typically 12-hours intermittent use
- Li-ion = typically 27-hours intermittent use

USB Data Port

- Update the receivers firmware
- Download datalogs

Accessory Port

- Remote Stethoscope Antenna
- A-Frame Fault locator
- Vehicle charging lead
- Charge Li-ion battery

Antenna Configuration

- Two sets of 3D antenna
- Omnidirectional antenna array

Ultra Bright LCD

- High visibility 4.3"/10cm LCD
- Auto backlight

Module Compartment

- Optional plug-and-play Bluetooth module

Data Logging

- 50 Million record internal storage
- GPS coordinates (if Bluetooth active)
- Download data with MyLocator app
- Access data VMMMap Cloud app

Construction

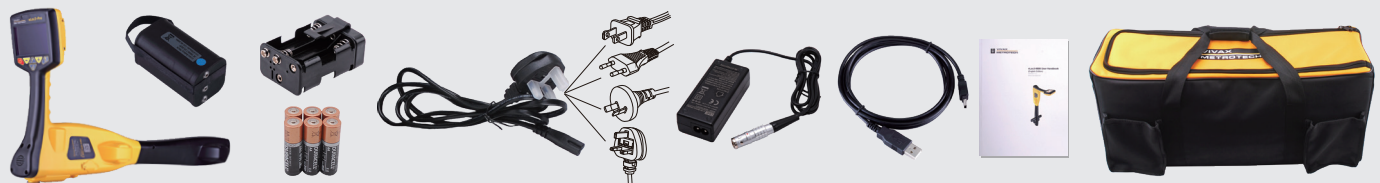
- High impact ABS plastic construction
- IP65 and NEMA 4 rating
- Lightweight at only 4.4lbs / 2kg



Optional plug-in MLA marker locator

vLoc3-9800 Receiver Specifications	
Construction	High impact ABS injection molded housing
Weight & Dimensions	4.4lbs (2kg) / 12.6in(L) x 8.6in(W) x 26.6in(H) (321mm x 219mm x 676mm)
Display	Transmissive 480 x 272 Pixel, 16-bit Color, High-visibility LCD, 4.3" / 10cm
Battery options	Rechargeable custom Lithium-ion batteries with 100-240V AC mains charger Six AA Alkaline batteries
Battery life	Lithium-ion – typically 27-hours intermittent use at 70°F (21°C) Alkaline – typically 12 hours intermittent use at 70°F (21°C)
Operating frequencies	Configurable frequencies from 16Hz to 200 kHz Power - 50Hz and 60Hz Radio - 10kHz - 22.7kHz bandwidth
Operating modes	Classic Locate left/right indication and Sonde Locate
Data logging and transfer	50 Million records - Records include depth, current, frequency, mode, gain setting, signal strength, GPS coordinate, date and time (if Bluetooth active) Download data from the receiver using the free MyLocator3 desktop app, save as xlx, txt, shp and kml files
Environmental	IP65 and NEMA 4

What's in the box



Popular Accessories



Compatible Transmitters

1- Watt Transmitters



VM-550FF / VM-560FF

5-Watt Transmitter



Loc3-5Tx

10-Watt Transmitter



Loc3-10Tx

Local Vivax-Metrotech Distributor:

Locators & Supplies, Inc.

(800) 950-6666

sales@locatorsandsupplies.com

www.locatorsandsupplies.com

Please visit our website for full product specifications.

www.vivax-metrotech.com | www.vxmt.com